



# BANKSIDE

---

AUTOGRAPH COLLECTION®  
HOTELS

*Our Creative Mark*



*“Art is power.”*

Dayna Lee

With Bankside it's always been about art. Art in all its forms - eclectic expressions of creativity, you might say. We're not a gallery and we don't want to be, what we hope we are is home to a hand-picked collection of assorted works and disciplines created, commissioned or curated by our designer Dayna Lee.

Dayna's vision for the hotel has always been 'Art school without the dust', a space where the wholly refined and totally unrefined can live together. An environment that embraces and reflects the neighbourhood's vibrant mix of arts and culture. To achieve this, she has put Mid-Century design at its heart, as this style's love of organic shapes, variety of materials and juxtaposing mediums, perfectly captures her concept of creating a residential, work-in-progress, creative environment.

Her concept is brought to life by our Makers in Residence programme. Partnering with the Contemporary Collective, we have given over a dedicated studio space for local emerging artists to work within.

This book is not an academic catalogue or a detailed list. It is a sketch, excuse the pun, of some of the intriguing and interesting objects and furniture on display, whether found in an antique shop or commissioned and made in a local studio. Whilst at Bankside we hope our collection will make you take a second glance, raise a smile and most importantly feel at home.

*“Ideas that are irreverent,  
a place where people can  
share these ideas.”*

*Dayna Lee*



## *Mid-Century focus*

We are not a Mid-Century showroom or museum, we do however have a deep passion for this design period. Walk into any room in the hotel or Art|Yard and you'll see what we mean.

Why? Because it's timeless, sleek, organic, simple, democratic and functional. It delights in looking back to the future, using new materials and methods to re-imagine traditional objects. In short Mid-Century design loves individuality and craftsmanship. It loves being used for what it was intended, but at the same time surprising you with a new take on an old purpose.

Dayna and her team have taken this ethos as the benchmark for everything that has been created or chosen for Bankside. That doesn't mean everything in the hotel is from this period, but it will have an emotional and artistic alignment to Mid-Century.

### *Quick history lesson...*

Broadly speaking, regarding home decor, the design period ran from the mid-1940's to 1965, though some people like to extend this to the early 1970's. Mid-Century obviously spilled into the artistic movement (e.g. Matisse and Kandinsky) of the time, and whether it be painting, sculpture or textiles, there is usually a sculptural element to be found, as is the use of contrasting materials.

Most importantly to us, is Mid-Century's eclecticism. This means that we can be whoever we want to be, we don't need to fit into a pre-conceived mould.

# Old and new realigned



Three portraits by Helen Gørill, commissioned by Bankside.

The brief: to take three iconic people from the past and re-imagine them as local residents from the past and present.

Helen Gørill was awarded a Doctorate in contemporary British Painting in 2017, she describes her work as “vandalising old masters and reviving art historical portraits through photobombing and combining elements from contemporary sub-cultures, often using media such as lipstick, eyeliner and human hair.”

These commissions don't disappoint.

Helen chose to reappropriate these three icons by incorporating Bankside elements into her collages, these included tickets, programmes, images of the area and actual pieces of jewellery and body parts from our staff. Our General Manager Douglas' eye can be seen on the portrait of Sir Christopher Wren (the architect for St. Paul's Cathedral, its famous dome is visible from the hotel), and our designer Dayna Lee's eye is on the Mona Lisa. Helen's choice of subjects was undoubtedly influenced by Bankside's location, hence the inclusion of Shakespeare (his Globe Theatre is close by) - with a skateboard, (South Bank's Undercroft skate park is a well-known landmark).



# Our neighbourhood



Tiles at Bankside, these aren't just wall coverings but another medium for creative expression.

Take a look on our restaurant Art[Yard's walls and you'll be rewarded with Laura Carlin's hand-painted tiles, whose illustrations bring the cultural narratives of South Bank to life. Laura was commissioned by Dayna, through champions of British art and craft The New Craftsmen. She has won the Bratislava children's book illustration award (the first Brit to do so in 20 years) and the Quentin Blake Illustration Prize, two years in a row.

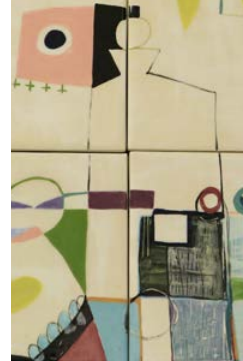
Dayna was attracted to this award-winning ceramicist and illustrator's ability to turn the mundane into the whimsical. A technique that suited Dayna's want for creative pieces that showed unknown London and Bankside, daily life transformed into painterly abstractions, a 3-D story of the hotel and its surroundings.

These tiles are a mixture of scenes carried out along a number of tiles, with single tiles punctuating the murals, acting as a bridge between the longer stories.

Don't expect a chronological visual journey, rather a jumble of the historic and contemporary, the playful and serious. Charming, quirky and off-beat, all the things we aspire to be here at Bankside.



Artist: Laura Carlin



## *Antiques and art*

All of the antiques and artworks have been hand-picked by Dayna and her design team. They have been sourced from antique shops and markets, whilst we do not have the provenance for many of the items, we can say that each piece has been selected for its emotional and artistic alignment to Mid-Century style.







**Herbarium**  
**Harry Dwight Döon Ripley**  
**(1908-1973)**

British linguist, plant collector, horticulturist and author.

A culmination of his love for horticulture and the vibrant New York art scene of the 1940's, this particular piece was inspired by Dwight Ripley's botanical explorations across the globe.

**Abstract Acrylic.**  
**Arthur De Salvo 1953**

Drip style painting that reflects the style of Jackson Pollock, an American painter and a major figure in the abstract expressionist movement.

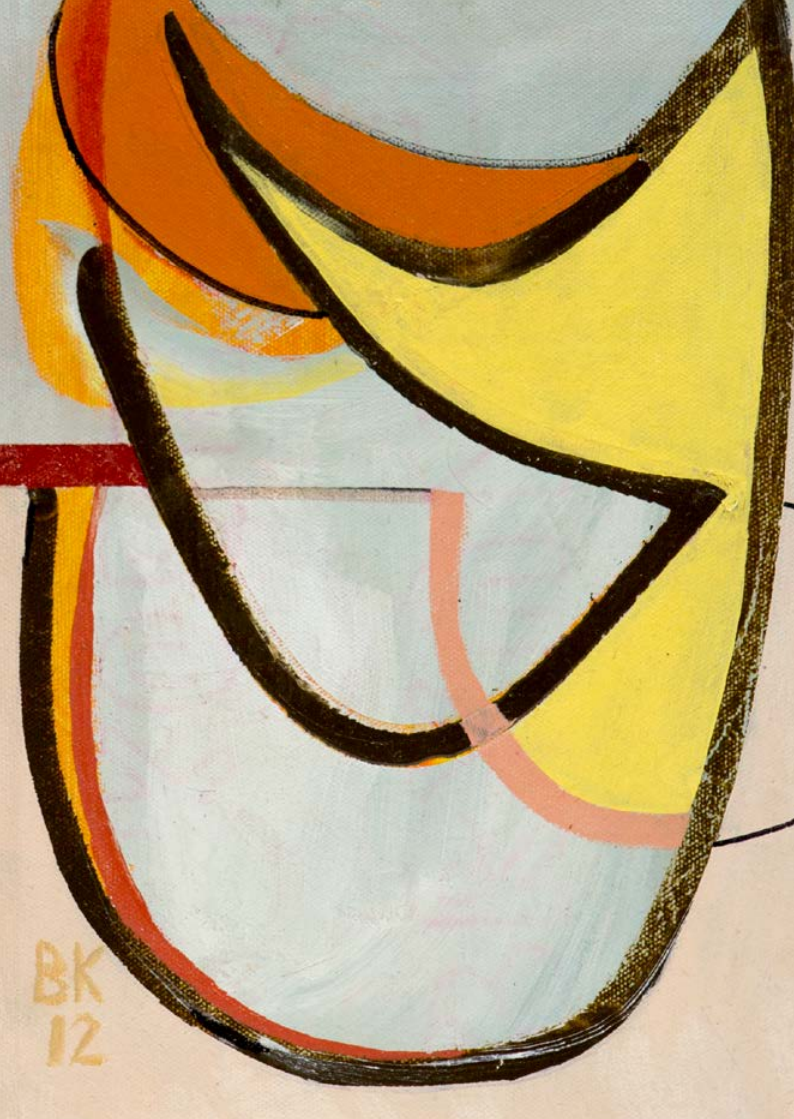


**"Girl at Bird Market" 1958**  
**Lithograph**

**Rudolf Harold (Ru) van Rossem**

Born in Amsterdam, Ru Van Rossem lived in England in the first half of the 1950's. As an artist, Van Rossem reflected Mid-Century eclecticism, exploring a variety of mediums including, sculptures, drawings, wood and copper engravings, ex libris, lithographs and costume designs.





## Visual feast

Call us logical, but it seems only correct that some of the art in our restaurant and bar should have a relationship with ...food.

So without sounding smug, we are rather proud of our three paintings by Benni Korzen. Why? Because he is the Oscar-winning Danish producer, best known for his film *Babette's Feast* (1987). A film that has a French banquet as its centrepiece which has been described by many critics as cinema's most mouth-watering menu.

Benni Korzen, who now lives in New York, continues to produce films as well as painting Mid-Century inspired art.







## *Ceramics and pottery*

Mid-Century modern pottery artists were all about designs inspired by nature. While mass-produced pottery of the Mid-Century was often inspired by "Atomic Age" iconography, studio pottery sought to reflect organic shapes and textures, highlighting the natural, qualities of the clay and glaze. Some of the classic Mid-Century pottery was often bulky and heavy with very thick glazes, sometimes multilayered up to four layers deep with different colours and textures.

You will find a collection of classic Mid-Century pottery pieces around the hotel, these have been purchased from various antique shops and collectors.





### **Mannequins sculpted by famous French artist Edouard Levine**

Walk through our doors and you'll be greeted by famous French artist Edouard Levine's mannequins. Their articulated body, gives the Bankside family the opportunity to express the hotel's ever-changing moods and personality on a daily basis.

### **Patinated brass moveable fluid sculpture, by Arleen Eichengreen and Nancy Gensburg.**

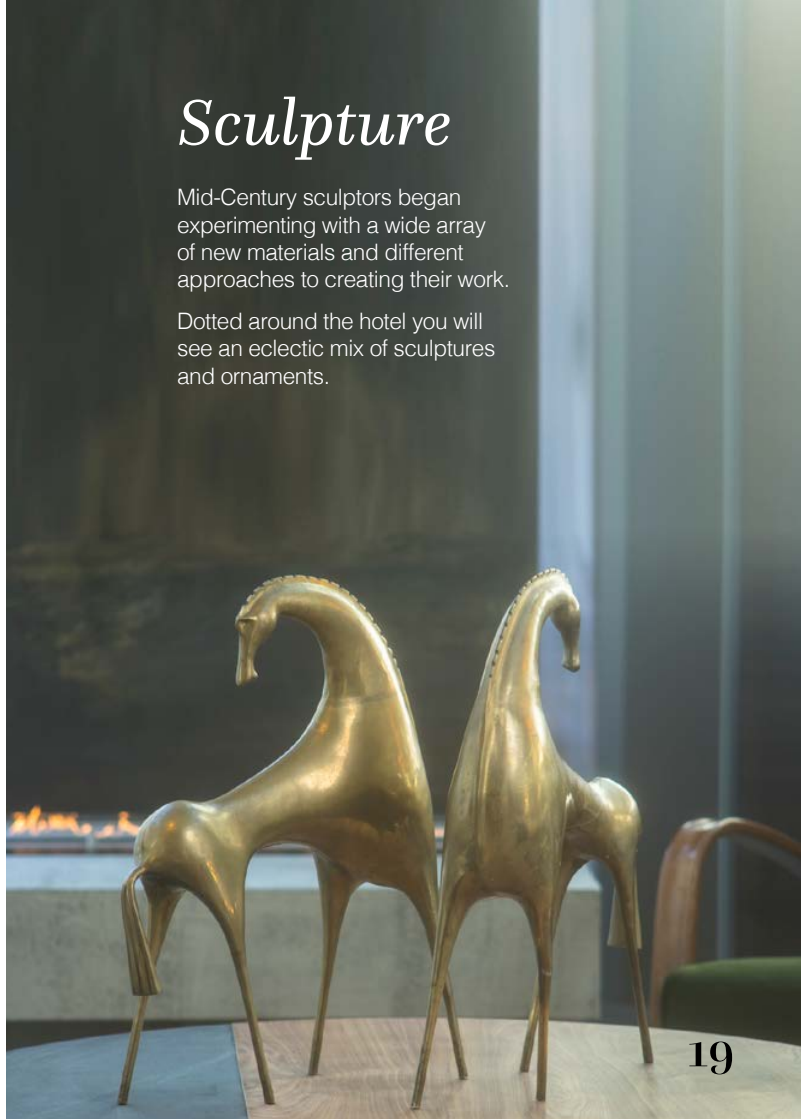
Sister team of Mid-Century sculptors, known for creating moveable sculptures. Rear Figure pivots 360 degrees enabling a change to the sculpture's composition.



## *Sculpture*

Mid-Century sculptors began experimenting with a wide array of new materials and different approaches to creating their work.

Dotted around the hotel you will see an eclectic mix of sculptures and ornaments.



# *To make you smile*

Art doesn't have to be serious, self-important or grand. What we think it does need to be is something that evokes or creates an emotion, and what better emotion is there than happiness? You are staying in a hotel after all.

On Dayna's artistic treasure hunt, she stumbled across a selection of humorous pieces. These included a sparkly pants collage that lights up and a bouncy pig. Their provenance, Dayna doesn't know and doesn't care. What she does care about however is, could you resist a go on the bouncy toy? And if so were you as happy as a pig in...



If guests fancy rocking their own pair of sparkly pants, they can purchase this flashy little number from our vending machines.



# For fun and games

Head down to our meeting spaces and you'll see a collection of original wooden games from 1948/50 on the walls. They have no artistic importance, apart from the fact we like to think that back in day, rather than secretly playing Candy Crush on your phone during a meeting, would it have been possible to have a clandestine game of Big Shot?

We think not.



# Design inspired

Dayna and her team were keen for the past to influence the now. To do this, she looked back at some truly inspirational artists and designers, and then used them as key influencers on some modern-day pieces.



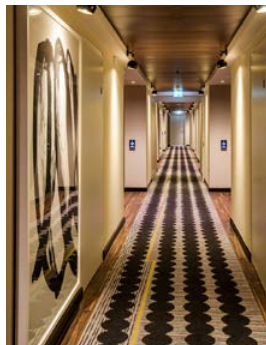
## Alexander Calder - inspired sconces

Black sconces wrapped around concrete pillars in the Lobby are inspired by Alexander Calder (1898–1976). Calder is widely considered to be one of the most important American sculptors of the 20th century. He is best known for his colourful, whimsical abstract public sculptures and his innovative mobiles, kinetic sculptures powered by motors or air currents, which embraced chance in their aesthetic.

## Cy Twombly - inspired corridor prints

Edwin Parker “Cy” Twombly Jr. (1928 – 2011), one of Dayna’s favourite artists was the creative catalyst for the series of large prints that can be seen in the guest room corridors.

Cy Twombly’s paintings are predominantly large-scale, freely-scribbled, calligraphic and graffiti-like works on solid fields of mostly grey, tan, or off-white colours.



## GŠ Ponti - inspired tõe design

GŠvanni “GŠ” Ponti (1891–1979) was an Italian architect, industrial designer, furniture designer, artist and writer associated with the development of modern architecture and modern industrial design in Italy. His striking geometric designs have inspired the floor and ceiling tões in ArtYard.



# Wall to wall creativity

Art on wall just changed to wall art. Enter the Lobby any you'll notice a wall that almost seems to be moving, changing shape. Dayna designed it, Spaeth Design built it; the wall's undulating shapes are made from concrete and exemplify Bankside's focus on texture.

The cast concrete wall blocks are inspired by Brutalist architecture, which arose in the mid 20th century, as an economical method of construction using raw concrete (béton brut).



## Turning the tables on waste

Tables made from recycled plastic. Our Melting Pot tables by Dirk Vander Kooij, caught Dayna's eye not only because she loved their design, but she was also attracted to Dirk's passion for sustainability.

Stoic in design, a single slab atop a conical base serves to plainly showcase the unlikely uber-materials - CD's, lawn furniture and agricultural tubing (to name but a few). Dirk describes his work as: "exposing texture, unmanipulated, truthful and autonomous."

You can find these tables in the Lobby.

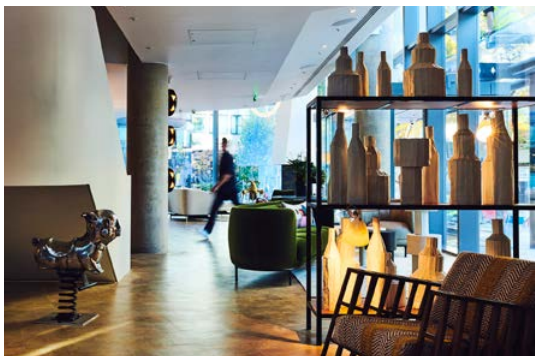


## *In progress*

Art school without the dust, work in progress, refined and unrefined - the underlying foundation for Bankside, and visual motifs don't get closer to that message than these Paola Paronetto pots.

These simple pots in the Lobby are situated on shelves that Dayna has designed to intentionally resemble clay drying shelves. This visible connectivity between finished object and technique, sets the exact tone and atmosphere Dayna was hoping to achieve - genuine creativity and not over-polished artistry.

Paolo, from Pordenone in Italy, started her career in 1988. Alongside her own work, she also teaches at the renowned Meridiana School of Ceramics. Paolo's work is invariably inspired by nature and its simplicity.



## *Local craft*

We are lucky enough to be located at the heart of creative London. Some large galleries, theatres and designers call South Bank their home, but so do a host of smaller burgeoning creatives. The Ceramicists are some such people. So when we were looking for someone to make a collection of bespoke plates, to be used as gifts, we discovered this talented pair.

This local studio was launched in 2014, since then their bespoke ceramics have proved highly desirable with a wide variety of creative clients. They believe in authenticity, simplicity and true quality. Ask them about how they work, and they'll tell you: "No two pieces are the same, as we interact and communicate with everything we make - that way each design is unique."

We think they are the embodiment of the new wave of craftsmen that are taking up residence in our neighbourhood.

# Part of the furniture

Dayna has always insisted that the creative process should extend to the fabric of the hotel. The chairs, the tables, the tableware in fact everything wherever possible should have a narrative, a connection to the hotel's ethos.



## Malgorzata Bany

This London-based artist and designer who specialises in Jesmonite has made a collection of side tables for us - you'll find them in the Lobby. Malgorzata, courtesy of The New Craftsmen, works across a wide range of disciplines including sculpture, furniture and homewares; her work adheres to the principles of sensuality, tactility and minimalism. In keeping with the spirit of Bankside, she blurs the lines between art and design, form and functionality.

Having completed her MA at The Slade School of Fine Art, Malgorzata continues to work in association with the University College London to develop her own pigments and research materials.

## Galvin Brothers Handcrafted Furniture

Bankside is not just about London design, Dayna loves inspirational design wherever she finds it and Beverley, East Yorkshire, is just one such place. Galvin Brothers, founded in 2012, built on their father's 62-years of joinery and cabinet making, has made some exceptionally beautiful tables for us.

Their work which celebrates the wonderful properties of hardwood and traditional techniques can be seen firsthand in the Lobby and Art Yard. In front of the fireplace stands a custom stone walnut table and their hand-rubbed dining tables make a welcoming sight in our restaurant.

It is Dayna's desire to fill the hotel with beautiful, yet functional pieces. This stops Bankside becoming a cold art hotel and instead a hotel full of warmth and personality.







## Making art

Everybody at Bankside, including Dayna, believes in giving people a platform for their talent. This mindset extends to everyone who is part of the Bankside family, and that obviously includes the people responsible for making our creative pieces.

To help us discover this up-and-coming talent, we have teamed up with Contemporary Collective, a gallery that helps emerging artists step up to the next level. Between the two of us we have put together an on-going Maker in Residence programme which will be filled by these carefully curated artists. Bankside has given over a permanent creative space in the hotel, where this talent can carry out their particular discipline. Guests can then watch a particular artist on their creative journey, from the conception to the finished piece.



**Luke Walker**

One such Maker in Residence is artist Luke Walker. He is an urban landscape painter who believes that art should raise awareness about environmental issues. Luke comments about working at Bankside: "The space here is much larger than my own studio and that extra space changes the way you work. A different environment creates different work. Also interacting with guests forms a dialogue that influences the way you work and so inevitably, what you end up producing."



*“Every single person on this planet is creative, even if they are not actively pursuing it, they want to be in that environment.”*

*Dayna Lee*



*#whereyoubelong*



banksidehotel

[www.banksidehotel.com](http://www.banksidehotel.com)